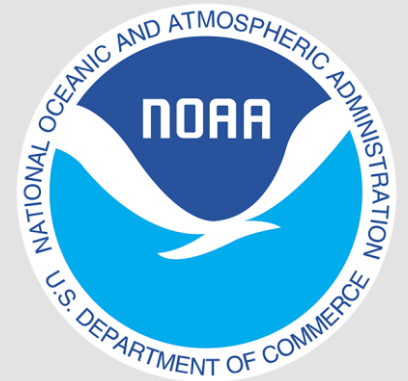


PR DAP Meeting on Compatible Regulations EEZ-PR October 27 2021 Report to the Council – 176th

Nelson Crespo- DAP chair PR



Queen Conch Fishery

- Request to the Council to reassess queen conch closure in EEZ
- Evaluate the possibility of re-opening the EEZ and have a re-evaluate the seasonal closure
- Recommend local government for modifications in their jurisdiction

Queen Conch	EEZ 50 CFR 622.490-95	PR
Seasonal Closure/Closed fishery EEZ (West of 64°34' W)	Closed 2005	No harvest or possession August 1 through October 31
Minimum size 9 inches shell length or 3/8-inch lip thickness (No harvest of undersized conch is permitted.)	Closed 2005	YES
Landed whole/Alive	Closed 2005	YES but Administrative Order in place: can take out of the shell at sea
No imports		CITES Permit
ACL (0 lbs); PR 150 conch per day per registered commercial fishing vessel on which a licensed commercial fisher must be present.	0	OPEN 150 conch/day
Bag Limits Recreational	0	3 conch/pp up to 12/boat
Area restrictions (Abrir La Sierra, Inshore areas)	YES	YES
Gear Restrictions:. Hookah	YES	YES

Lobster

- Establish bag limit for the recreational sector in state waters
- Regulate the use of nets in the state's lobster fishery: high bycatch, high mortality of lobster
 - Regulate soak time
 - Regulate number of nets

Spiny lobster	EEZ	PR
No berried lobster	1985	1936
Minimum size 3.5" Carapace Length	1985	1983
Landed whole	1985	1936
No imports <3.5" CL (tail meat)	2009	2009
ACL (327,920 lbs)	2011	NO
Bag Limits Recreational (3 per person/day up to 10 maximum)	2011	NO
Gear restrictions: (1) No explosives, poisons, drugs, other chemicals, spears, hooks, or similar devices may be used to take lobsters. (2) No Hookah (3) No gill or trammel nets	YES (1,3)	YES (1,2)
Years with size limit >3.5"CL	36	38

Size limits for species new to management in the EEZ

- To adopt size regulation in federal waters for white grunt, king (sierra carite) and cero (alasana) mackerels as established in PR regulations

Puerto Rico – Reglamento de Pesca 2010 Especies de peces reglamentados por tamaño mínimo

Nombre Científico	Nombre Común	Tamaño Mínimo	
		LH (pulg)	LH (mm)
<i>Centropomus undecimalis</i>	Robalo común	22	559
<i>Haemulon plumieri</i>	Boquicolorao, Cachicata blanca, ronco	8	203
<i>Lactophrys polygonius</i>	Chapín panal	7	178
<i>Lactophrys quadricornis</i>	Chapín veteado	7	178
<i>Ocyurus chrysurus</i>	Colirrubia	10.5	267
<i>Scomberomorus cavalla</i>	Sierra carite	20	508
<i>Scomberomorus regalis</i>	Sierra alasana	16	406

LH = Largo Horquilla

Todas las medidas serán tomadas desde la punta del hocico con la boca cerrada hasta la bifurcación de la aleta caudal o cola (Largo Horquilla).

Recreational Bag limit in EEZ

- Recommend the adoption of snapper, grouper, parrotfish combined recreational bag limit in state waters.

Applies in the Puerto Rico EEZ

Table 5.6.1. Bag and possession limits for the recreational harvest of Puerto Rico Reef Fish.

Aggregate bag limit for:	Allowed quantity:
Snapper grouper parrotfish, combined	5 fish per person/day, of which no more than 2 may be parrotfish, or if 3 or more persons are aboard, 15 fish total per vessel/day, of which no more than 6 may be parrotfish.
angelfish, grunts, wrasses, jacks, triggerfish, surgeonfish, combined	5 fish per person/day, of which no more than 1 may be surgeonfish, or, if 3 or more persons are aboard, 15 fish total per vessel/day, of which no more than 4 may be surgeonfish.

Mahi, wahoo and mackerels: Recreational bag limits

- Review bag limits applied in the state waters (dorado 5/15, wahoo/mackerels 5/15 combined)
- Recommend compatibility (5/15 for dorado) of regulations after detailed assessment

Bag limits for the recreational sector in the State waters of Puerto Rico (2010):

Pesque dorado (*Coryphaena hippurus*), peto (*Acanthocybium solandri*) o sierra (*Scomberomorus spp.*) sobre las cuotas. En el caso de petos o sierras, se limita a cinco (5) ejemplares por especie, por pescador por día o una cuota de diez (10) ejemplares por embarcación por día, lo que sea menor. En el caso de dorados, se permite la captura de hasta diez (10) dorados por día por pescador, o una cuota de treinta (30) por embarcación, lo que sea menor. El Departamento podrá autorizar una cuota mayor en caso de torneos para lo cual, deberá presentarse una solicitud al Secretario indicando las cantidades a ser pescadas.

	Bag limit pp	Bag limit per boat
Dorado	10	30
Wahoo	5	10
Mackerels	5	10

Seasonal Closures

- Grouper Unit 4: Needs more studies to evaluate closure.
- Red hind seasonal closure leave as is.
- Snapper Unit 1 seasonal closure keep as is.
- Snapper Unit 4 & 5: Need more studies, keep as is, closure working out.

Seasonal Closures in the Puerto Rico EEZ and State Waters that apply to both commercial and recreational fishing. Includes the months of the closures and the year(s) in which these were implemented or changed.

	EEZ	PR
Grouper Unit 4 (Year Implemented)	Feb 1-April 30 2005	Feb 1-April 30 2006
Yellowfin grouper	Feb-April	Feb-April
Tiger grouper	Feb-April	
Red grouper	Feb-April	
Black grouper	Feb-April	
Yellowmouth (new)		
Grouper Unit 6 (Year implemented)	1 Dec- Feb 2005	1 Dec- Feb 2006 (1999)
Red hind	1 Dec- Feb	1 Dec- Feb
Snapper Unit 1 (Year Implemented)	Oct 1-Dec 31 2005	Oct 1-Dec 31 2006
Silk snapper	Oct-Dec	Oct-Dec
Vermillion	Oct-Dec	
Black	Oct-Dec	
Blackfin	Oct-Dec	Oct-Dec
Snapper Unit 4 and 5 (Year Implemented)	Apr 1- Jun 30 2005	Apr 1- May 31 2006
Mutton snapper	April-June	April-May
Lane snapper	April-June	

Fishing Gear

- Include regulations on bow and arrow for both EEZ and PR waters.

Prohibited use	Regulated gear and year implemented for spiny lobster and reef fish in the US Caribbean EEZ and Puerto Rico (PR).	
	EEZ	PR
Gears		
Explosives	1981	(1936; 2004)
Powerheads		2004
Dynamite	1981	(1936; 2004)
C4		2004
Poison	1981	(1936; 2004)
Drugs	1994	(1936; 2004)
Detergent		2004
Electric current		2004
Chemical	1994	(1936; 2004)
Biological component		2004
Hookah	QC (1997)	QC (2005)
SCUBA +spear		(2004 recreational)
Spearguns (docks/MPAs/night/<10 0' shore)		2004

Nets

Conduct a revision, an inventory of fishing gear and their impacts.

For Spiny Lobster

- Request to evaluate the use of trammel net in state waters.
- Permits for trammel nets.
- Request to establish a maximum number of nets fished: No more than 3 nets per fisher in a 12-hour period.
- Establish limited soak time for the nets

Restrictions and prohibitions on the use of nets, long lines and other gears and year implemented (in parenthesis) in the US Caribbean EEZ and Puerto Rico (PR).		
	EEZ	Puerto Rico
Nets	2005	2004
Beach seines		Fished in water; mesh size regulations
calones		>4.25" (108 mm)
segundos		3.25" (83 mm)
batidores		2.25" (57 mm)
bocheches		2" (51 mm)
buche		1.5" (38 mm)
Gill nets	2005	> 2" mesh (51 mm)
Trammel net	2005	
Bait nets	Allowed	0.25" (2004)
Nets +SCUBA		Not Allowed (2004)
Long lines		< 3 miles long
*changes?		

Traps

- Discuss the use of plastic components in traps: only for the escape panel.
- Need regulate milk crates being used as fish traps.
- Identify sustainable materials for traps (wood crates)



50 CFR 622.431

A bare-wire fish trap that has hexagonal mesh openings must have a minimum mesh size of 1.5 inch in the smallest dimension measured between centers of opposite strands. A bare-wire fish trap that has other than hexagonal mesh openings or a fish trap of other than bare wire, such as coated wire or plastic, must have a minimum mesh size of 2.0 inch in the smallest dimension measured between centers of opposite strands.

A fish trap used or possessed in the Caribbean EEZ must have a panel located on one side of the trap, excluding the top, bottom, and side containing the trap entrance. The opening covered by the panel must measure not less than 8 by 8 inches (20.3 by 20.3 cm). The mesh size of the panel may not be smaller than the mesh size of the trap. The panel must be attached to the trap with untreated jute twine with a diameter not exceeding 1/8 inch (3.2 mm). An access door may serve as the panel, provided it is on an appropriate side, it is hinged only at its bottom, its only other fastening is untreated jute twine with a diameter not exceeding 1/8 inch (3.2 mm), and such fastening is at the top of the door so that the door will fall open when such twine degrades. Jute twine used to secure a panel may not be wrapped or overlapped.

Compatible regulations for traps in the EEZ and Puerto Rico State waters.

EEZ	PR
2 x 2 in square; 1.5 in hex	
8 x 8 in escape panel (1)	
jute 1/8 in (3mm)	16 in
18 gauge non-galvanized	

Area regulations

- Discuss each discrepancy by area for local government to adopt federal regulations
- Recommend Council to study compatibility taking into consideration biology and socioeconomic factors
- Conduct a vessel inventory

PR

Prohibited to anchor, use nets, traps, lobster pots, and benthic longlines in Bajo de Cico, Abrir La Sierra and Tourmaline.

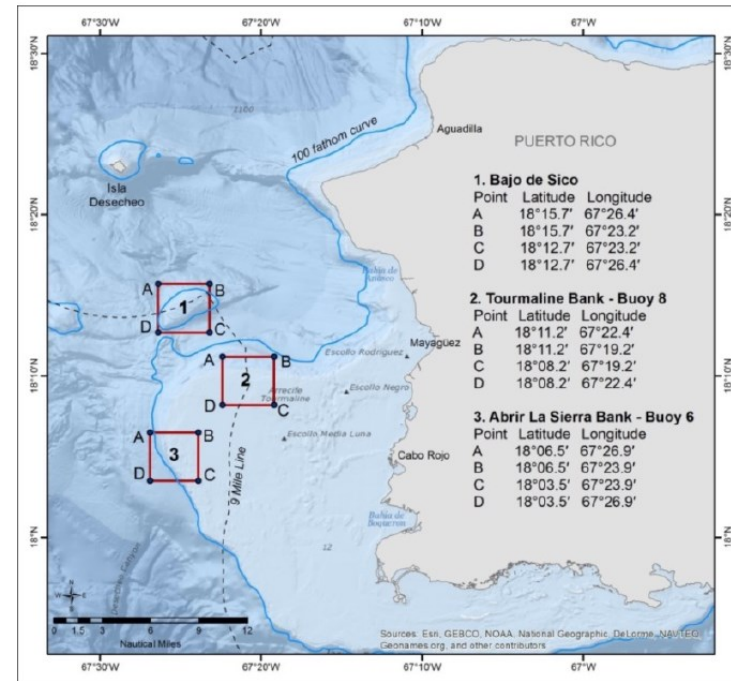


Figure 5.10.1. Map of the Bajo de Sico (#1), Tourmaline Bank (#2), and Abrir La Sierra (#3) closed areas off the west coast of Puerto Rico.

License permits

- Suggest for federal to adopt state regulations. No need for another permit.
- Evaluate license or permit valid in both jurisdictions.
- HMS outreach meetings with fishers.

License and Permit requirements and year of implementation in the US Caribbean Exclusive Economic Zone (EEZ) and Puerto Rico for reef fish, queen conch and spiny lobster.

	EEZ	PR
Commercial Fishing License Required	NO	YES
Implementation Year		1936
Changes in requirements		1998/2004
Moratoria		
Recreational Fishing License Required	NO*	YES
Implementation Year		Not Yet (2017)
Changes in requirements	https://www.st.nmfs.noaa.gov/nnri/	
Moratoria		1997/1998/2004
Species Permits		
Queen Conch (<i>S. gigas</i>)	None	Permit C/R
Year implemented		C 2004
Spiny lobster (<i>P. argus</i>)	None	Permit C/R
Year implemented		C 2004
SU2 (Queen and cardinal snappers)	None	Permit C
Year implemented		2013

Legend: C=Commercial; R=Recreational; PR=Puerto Rico